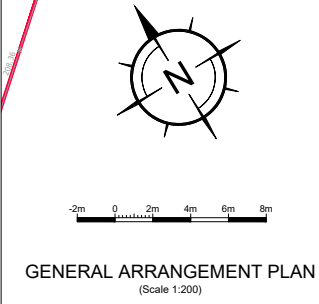
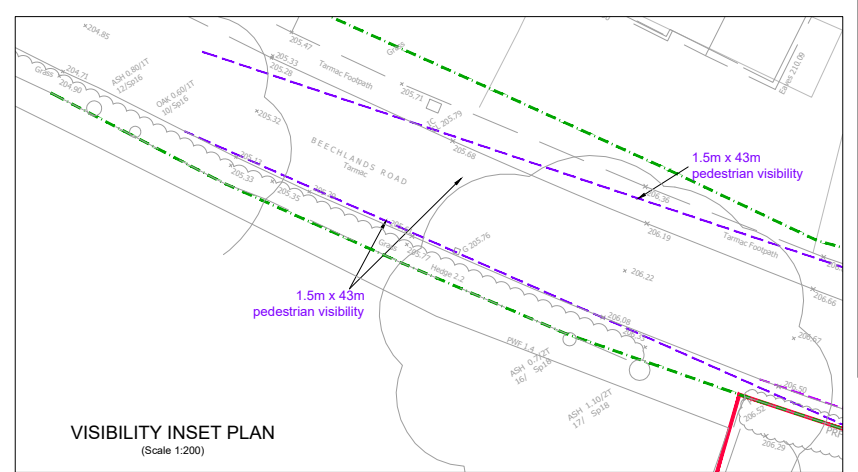


**NOTE:**  
Vehicular access to be approved, all details relating to internal site design, path location and crossing points to be agreed at detail design and reserved matters

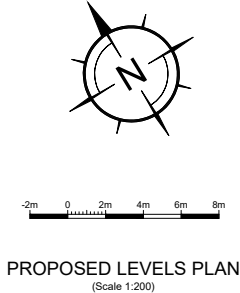
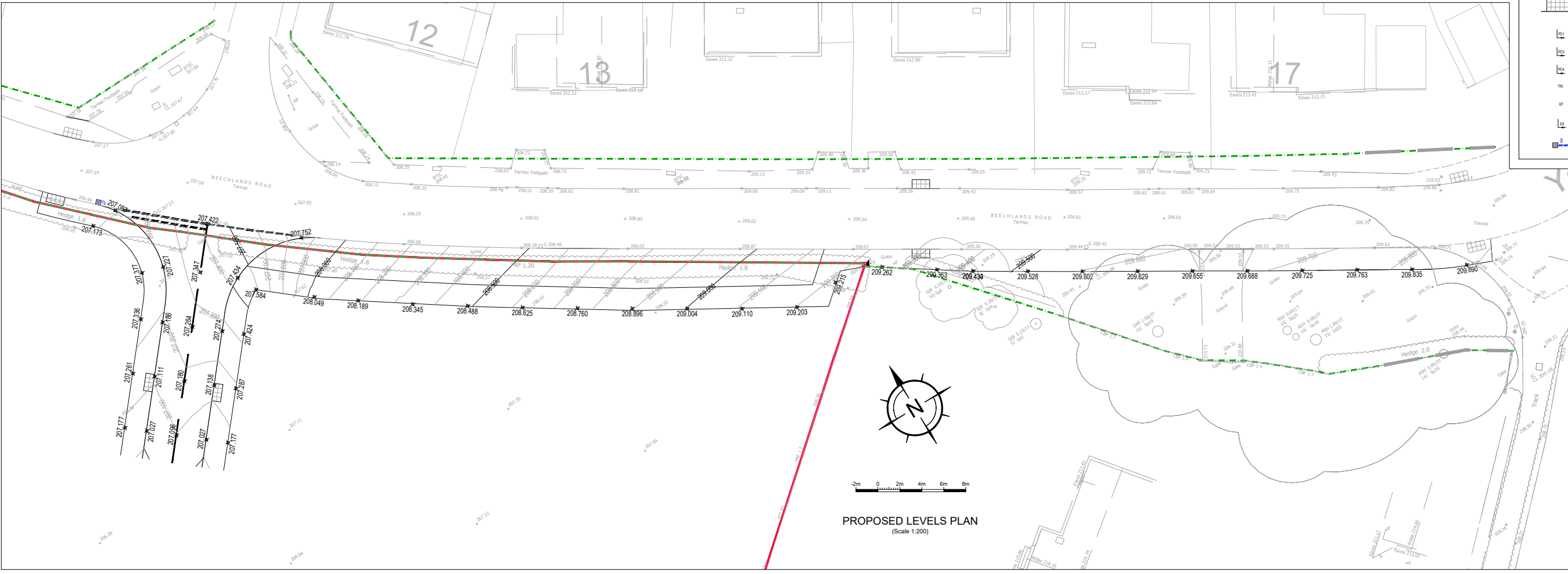


**GENERAL ARRANGEMENT PLAN**  
(Scale 1:200)

Series	Dwg. No.	Rev	Drawing Title
HCC11/C/	010	B	Precast concrete kerbs
HCC11/C/	045	C	Footways Types 1A, 1B, 2 & 3
HCC11/C/	060	B	Uncontrolled pedestrian crossing in new works
HCC11/C/	065	B	Uncontrolled pedestrian crossing installed in existing footway
HCC11/C/	090	C	Reinstatement of drain and duct trenches in existing carriageways
HCC11/C/	126	A	Granite Sett Carriageway Strip
HCC11/D/	015	B	Gully Type 1

**LEGEND - Agreement Plan**

- - - - - Highway Boundary
- Site Boundary
- - - - - Pedestrian Visibility Splay
- - - - - Junction Visibility Splay
- S278 Footway - Full Depth Construction to drawing HCC11/C/045 Footway Type 1A
- S278 Verge
- S278 Carriageway - Full Depth Construction
- New Uncontrolled pedestrian crossing with buff colour blister tactile paving to drawing HCC11/C/060 when constructed in new footway
- PC1 100mm upstand kerb to drawing HCC11/C/010
- PC3 25mm upstand kerb to drawing HCC11/C/010
- PC4 Flush kerb to drawing HCC11/C/010
- Transition kerb to Detail A, drawing HCC11/C/015
- Precast concrete EF Edging to BS EN 1340.
- Existing kerbs
- Gully Type 1T, drawing HCC11/D/15



**PROPOSED LEVELS PLAN**  
(Scale 1:200)

- GENERAL NOTES:**
- All dimensions to be checked on site. All details and dimensions relating to sub-Contractors work must be checked and agreed between the sub-Contractor or supplier and the general Contractor.
  - This drawing is to be read in conjunction with all relevant Architect's and Engineer's drawings and specification.
  - The main Contractor is responsible for ensuring the stability of the structure whilst the works are in progress.
  - Any information given regarding existing underground services is given in good faith after consultation with the relevant authority. No liability is accepted by the Consultant and the main Contractor is responsible for obtaining and checking all information and taking due care and attention whilst undertaking the works.

REV	DATE	INT	DESCRIPTION	CHK
C	30.04.24	AJD	North point direction corrected	SRM
B	26.04.24	AJD	Hatching, existing hedge notes and visibility splays updated	SRM
A	24.04.24	AJD	Uncontrolled crossing point on site access road moved, hedge details updated	SRM

Issue Status: **PRELIMINARY**

**The Civil Engineering Practice**  
11 Tungsten Building  
George Street  
Fishergate  
Sussex  
BN41 1RA  
01273 424424  
reception@civil.co.uk  
www.civil.co.uk

CLEAR	Bargate Homes Ltd
PROJECT	Land At Beechlands Road, Medstead
TITLE	General Arrangement
DRAWN	A Davies
DATE	Apr 2024
PROJECT NO.	23066
ENGINEER	S Macandrew
CHECKED	SM
SCALE	1:200 @ A1, 1:400 @ A3
DWG. NO.	103
REV.	C